



**Mobiyc Co.,Ltd**  
[www.mobiyc.com](http://www.mobiyc.com)

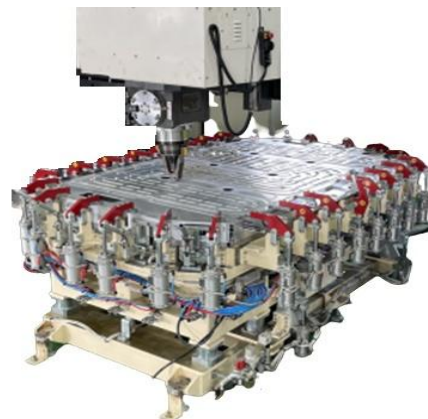
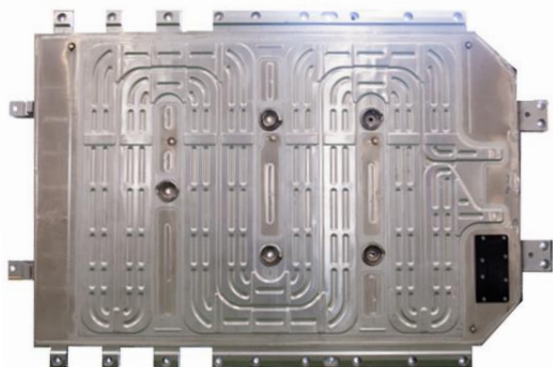
**Best eco-friendly welding system**  
**FSW(Friction Stir Welding)**

233,Saneopdanji-ro,Eomo-myeon,Gimcheon-si,Gyeongsangbuk-do,KOREA 39536  
TEL :+82-54-432-3389, FAX :+82-54-432-3383 , E-mail : [mobiyc@naver.com](mailto:mobiyc@naver.com)



# Production #1

Battery pack case, Inverter case, ICCU case for Electric vehicles



## ■ BPC(Battery Pack Case)

- ▶ Welding methode : FSW methode
- ▶ Supplier : Electric vehicles in Korea
- ▶ Function
  - : Protect your battery from the environment,
  - Prevent battery temperature from rising,
  - Increased mileage due to lighter weight



## ■ Cooling Jacket

- ▶ Welding methode
  - : FSW methode
- ▶ Supplier
  - : Electric vehicles in Korea
- ▶ Function
  - : Cooling Function of Integrated EV Controller



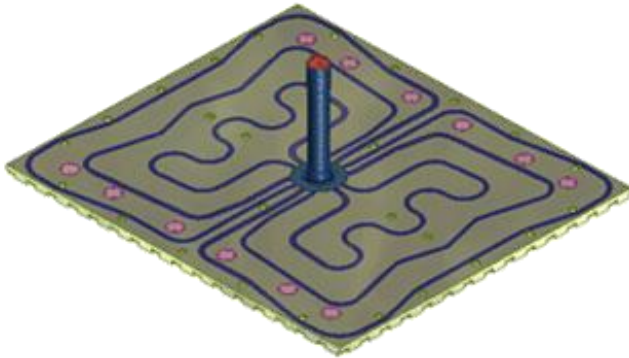
## ■ FCU case

- ▶ Welding methode
  - : FSW methode
- ▶ Supplier
  - : Electric vehicles in Korea
- ▶ Function
  - : Fuel cell control unit cooling function

It can be possible to design, manufacture, and test according to the customer's needs.

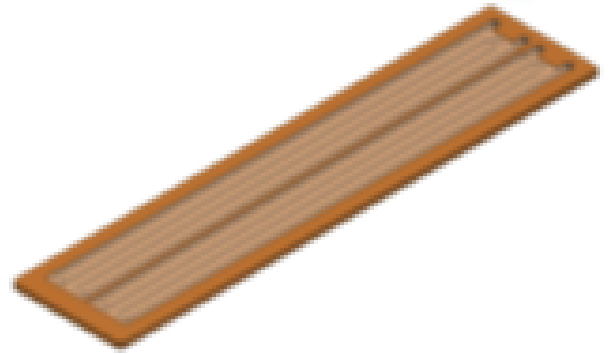
# Production #2

Backing Plates ,Scepters, Cold Plates, FSW Tool  
for Semiconductor Industry and Electronics Industry



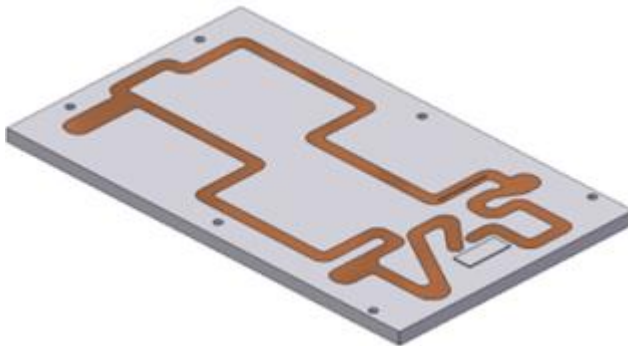
## ■ Susceptor

- ▶ Welding methode : FSW methode
- ▶ Supplier : Semiconductor Industry
- ▶ Function : Glass support and heating during LCD manufacturing process



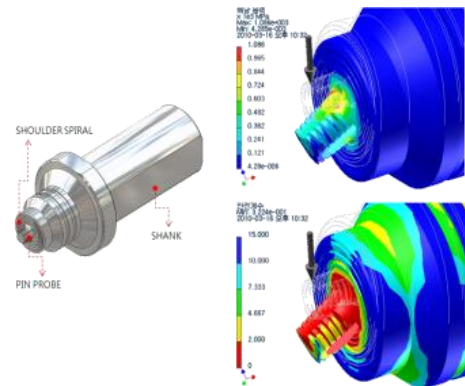
## ■ Backing Plate

- ▶ Welding methode : FSW methode
- ▶ Supplier : Semiconductor Industry
- ▶ Function : Cooling Function of LCD manufacturing process



## ■ Cold plate

- ▶ Welding methode : FSW methode
- ▶ Supplier : All business that needs a cooling plate
- ▶ Function : Cooling Function



## ■ FSW Tool

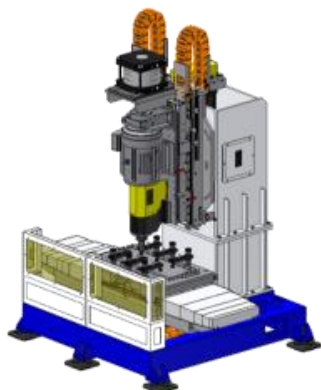
- ▶ Material : Alloyed carbon
- ▶ Available Materials : lightmetals(AL,CU,Mg etc)

It can be possible to design, manufacture, and test according to the customer's needs.



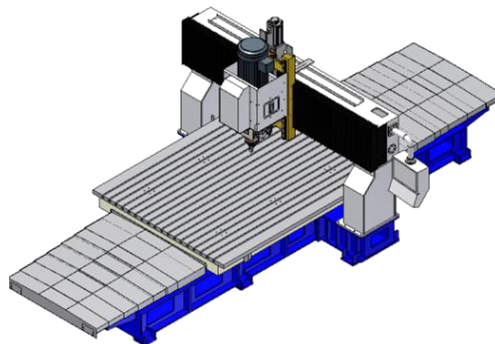
# Production #3

## FSWS(Friction Stir Welding System)



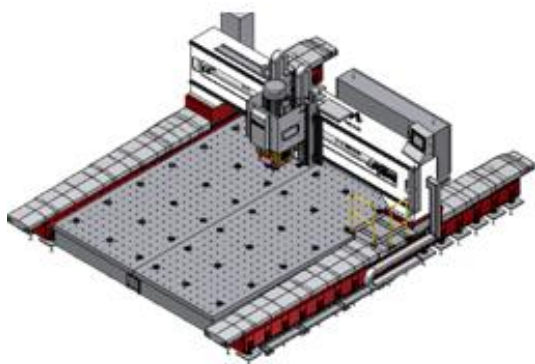
### TABLE MOVING TYPE(TW1D-1000Y600Z1T1)

- ▶ TABLE : 1000 x 600 x 250
- ▶ SPINDLE : max 4,000 RPM
- ▶ SPEED X,Y,Z : max 6,000 mm/min



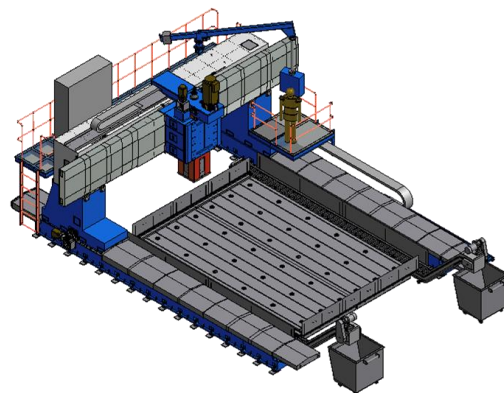
### TABLE MOVING TYPE(TW2D-2400Y3000Z3T1)

- ▶ TABLE : 2400 x 3000 x 400
- ▶ SPINDLE : max 4,000 RPM
- ▶ SPEED X,Y,Z : max 6,000 mm/min



### GANTRY TYPE(TW2D-3500Y4500Z2G1)

- ▶ TABLE : 3500 x 4500 x 350
- ▶ SPINDLE : 4,000 RPM
- ▶ SPEED X,Y,Z : max 6,000 mm/min



### GANTRY TYPE(TW2D-5000Y5000Z3G1)

- ▶ TABLE : 5000 x 5000 x 400
- ▶ SPINDLE : 4,000 RPM
- ▶ SPEED X,Y,Z : max 6,000 mm/min

## Ordering Information

TW	2	D	-	X	2	Y	2	Z	2	-	T	-		-	
Machine Type	Welding Type				X-Axis g Stroke	Y-Axis Welding Stroke		Z-Axis Weldin Welding Stroke		T : Table Moving Type G : Gantry Type					Option
	1: 1D Welding 2: 2D Welding				1: 800 2: 2,300 3: 3,200 User': -	1: 1,000 2: 2,700 3: 4,300 User': -		1: 250 2: 350 3: 400 User': -							No Signal 1: CAD/CAM
															Main Power
															No Signal : 380V/60Hz 1: 380V/50Hz

It can be possible to design, manufacture, and test according to the customer's needs.